

## 2.7 Environmental Sustainability

1. Consider life cycle heating and cooling costs for potential building materials to maximize energy conservation. Incorporate screens, ventilated windows, green roofs, shade structures and shade trees along facades, rooftops and surface parking lots to minimize heat gain effects should be considered.
2. Operable windows that allow natural ventilation and potentially eliminate the need for mechanical ventilation should be provided except where prohibited for the purpose of mitigating human health risk. If mechanical systems are necessary, use energy-efficient and low emission heating, ventilation and air conditioning (HVAC) systems.
3. “Smart systems” that collect and employ data to control building operational systems, including lighting, heating, ventilation and air conditioning, security, and other systems should be incorporated in all new development.
4. Site materials should be selected based on the following characteristics, to the greatest extent practicable:
  - Durability
  - Reparability
  - Low Toxicity
  - Recycled content
  - Regionally sourced
  - Ability to be recycled or reused
  - Ease of maintenance
5. Use of sustainable site materials is encouraged, including recycled content paving materials, permeable paving, low- VOC paint, and high-albedo surfaces and roofs. Lighting fixtures should be selected to maximize energy efficiency and minimize light pollution through reduced glare, light clutter and poorly directed lighting sources.

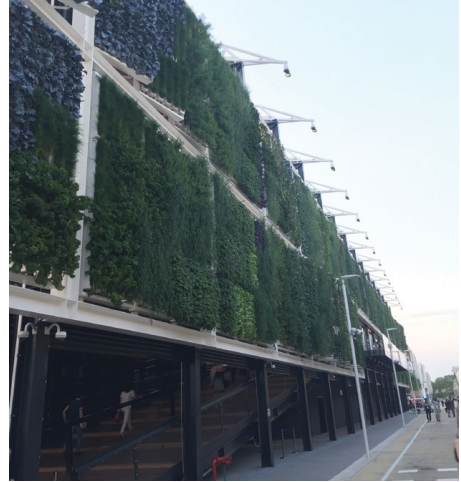


Figure 43. Building design features such as screens help improve environmental quality



Figure 44. Example of a project that utilized native trees and extended eaves for natural cooling.

6. Signage and wayfinding should be provided in commercial and residential developments to increase public awareness of electric vehicles and bicycles and support existing users.
7. Evergreen shrubs and trees should be used as screening devices along property lines, around mechanical equipment, and to obscure grillwork and fencing associated with service areas and parking garages.



*Figure 45. Green screening is encouraged for parking garages.*