

2.6 Parking

1. Parking areas should generally be below grade, in a podium, or “wrapped” with uses to reduce the visual impact. Where not feasible, surface parking should be located behind buildings.
2. Wherever possible, entrances to parking lots, structures, or podiums should be located along the side of a building and accessed from an alley or a driveway along the side of the property.
3. Design of parking lots, structures, or podiums should prioritize personal safety and security with pedestrian-friendly sidewalks, open stairwells, adequate nighttime lighting, direct sight lines, and regular upkeep.
4. Establish shared parking spaces that serve two or more separate developments, particularly when developments have different operation hours.
5. The minimum distance between vehicular entries along a street frontage should be 75 feet and entries be located in a manner that minimizes pedestrian/auto conflicts.
6. Encourage curb-space designated for short-term pickup and drop-off in support of delivery, taxi and ride hailing services.
7. Loading areas should not be more than 30 feet from a building’s service entrance.
8. Curbside parking is encouraged along all busy downtown streets to protect the pedestrian from moving vehicles.



Figure 41. Example of structure parking above ground floor retail uses.

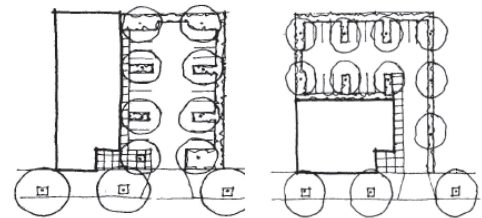


Figure 42. Parking location diagrams.