



# Vehicle Miles Travelled

Climate Action Subcommittee  
Meeting  
January 29, 2020

Transportation Planner, Transportation and Public Works

Nancy Adams

# CURRENT

- December 2018 - Office of Planning (OPR) completed an update to the CEQA Guidelines to implement the requirements of SB 743. The Guidelines state that VMT must be the metric used to determine significant transportation impacts.
- July 2020 - VMT will become a CEQA requirement

# CURRENT

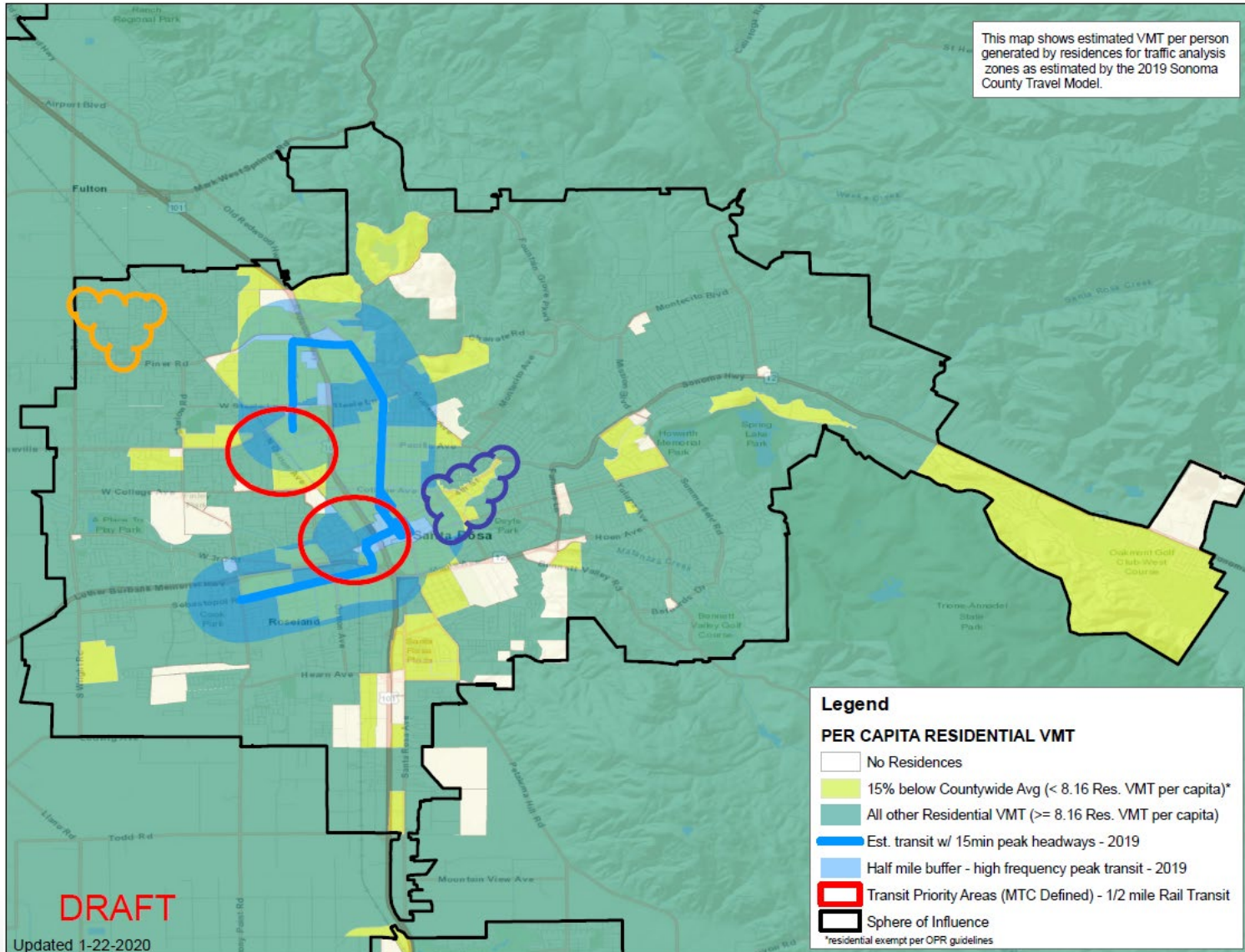
- SB 743 changes are intended to “more appropriately balance the needs of congestion management with statewide goals related to infill development, promotion of public health through active transportation, and reduction of greenhouse gas emissions.”

# DRAFT VMT THRESHOLDS

<b>Jurisdiction</b>	<b>PER CAPITA RESIDENTIAL VMT</b>	<b>HBW - Attraction/Job (PER WORKER COMMUTE VMT)</b>
Santa Rosa	9.7	8.5
Total Sonoma County	9.6	9.9

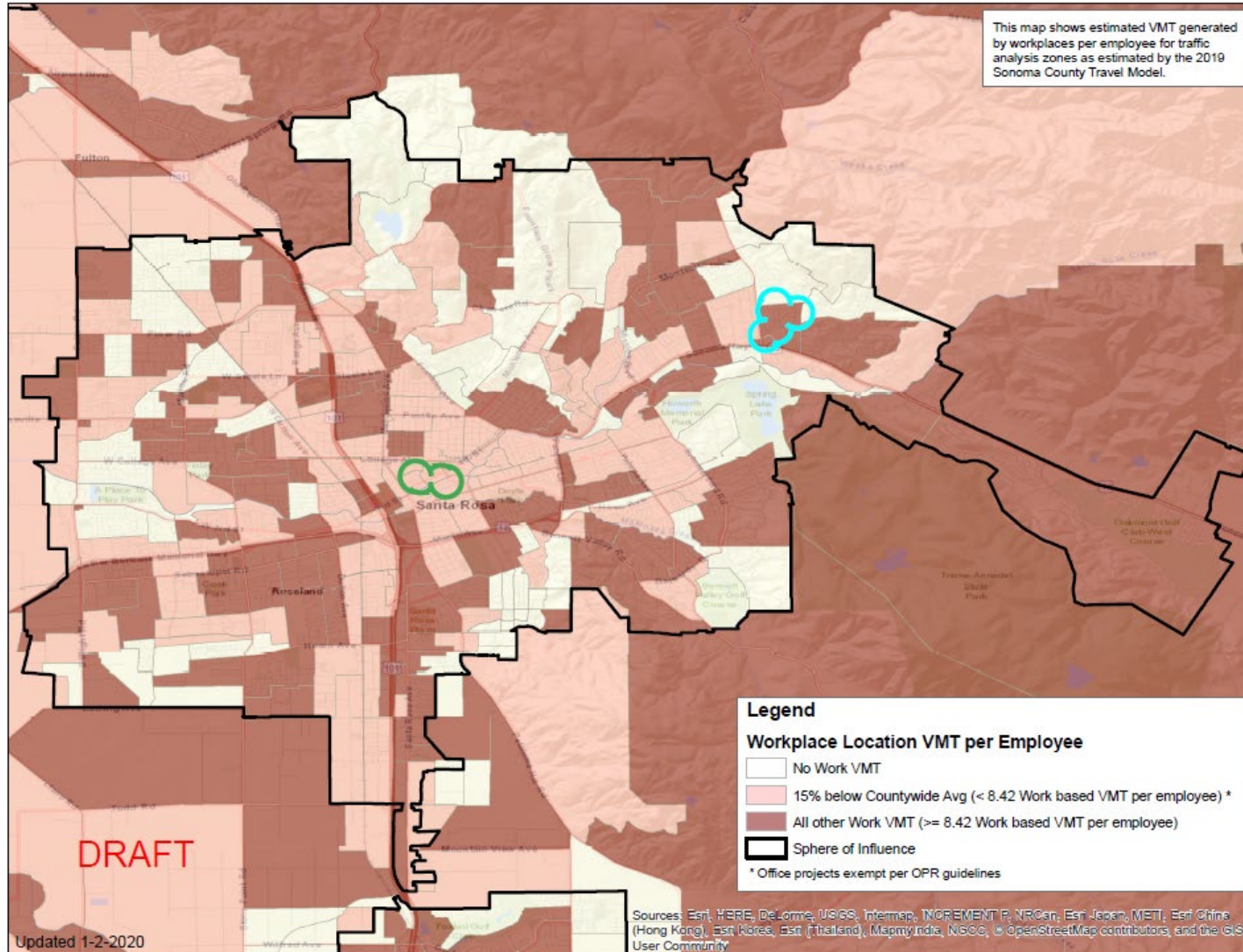
OPR recommended for residential      OPR recommended for office

# VMT Per Capita Map



# VMT Per Employee Map

This map shows estimated VMT generated by workplaces per employee for traffic analysis zones as estimated by the 2019 Sonoma County Travel Model.



DRAFT

Updated 1-2-2020

# QUESTIONS