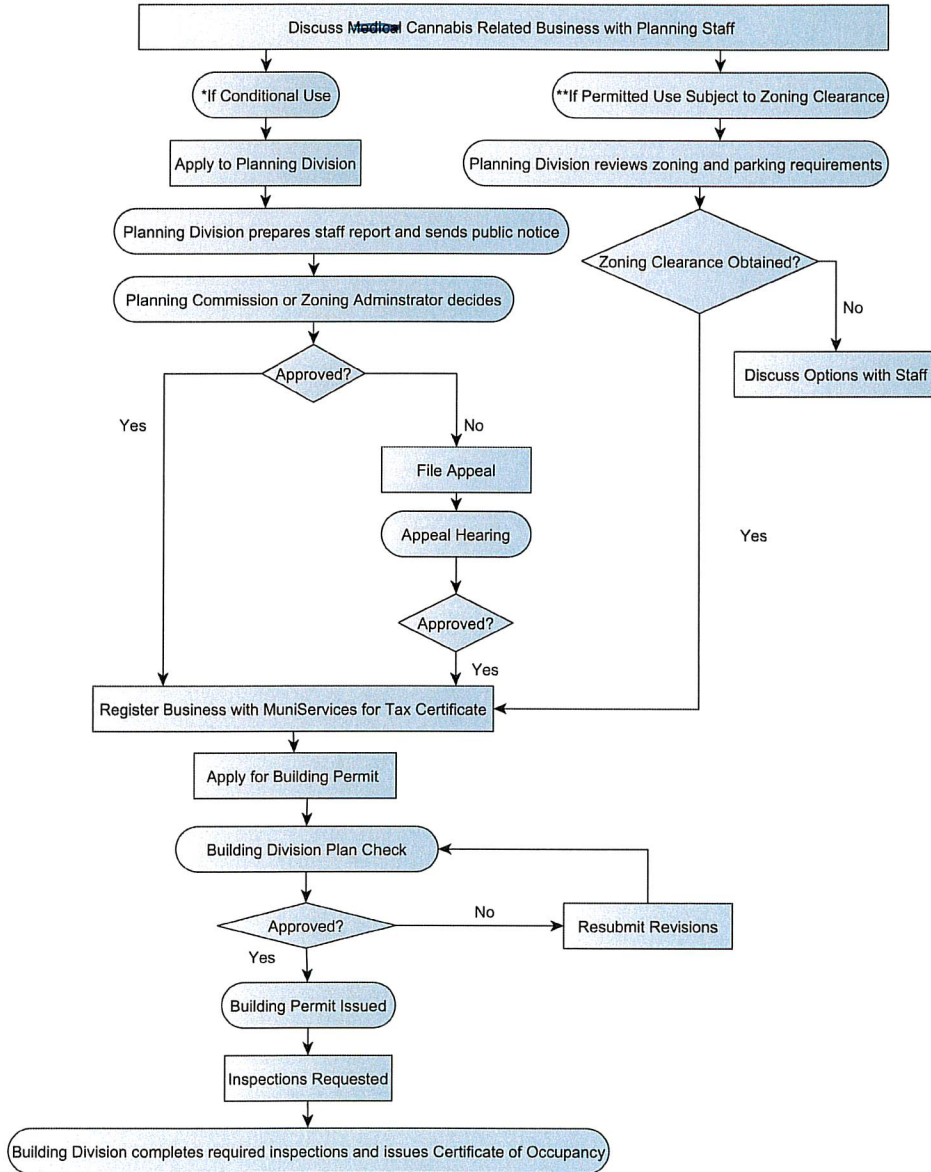


CANNABIS BUSINESS

Compliance Process Map -- From Zoning Verification to Certificate of Occupancy



*Conditional Use: A Business use that requires further review and approval by the Zoning Administrator or Planning Commission. These business types are listed as conditional uses in the Zoning Ordinance. The use permit may include certain conditions imposed by the Zoning Administrator or Planning Commission.

**Permitted use: A Business use permitted by the Zoning Ordinance without any special approvals beyond Zoning Clearance approved by Planning Staff.



Items applicant performs



Items City staff performs